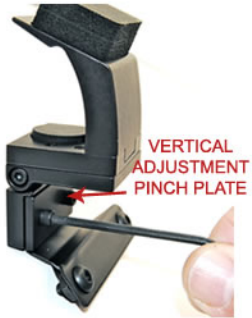
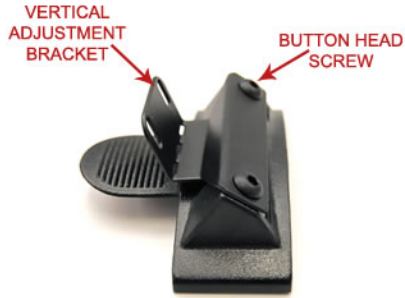


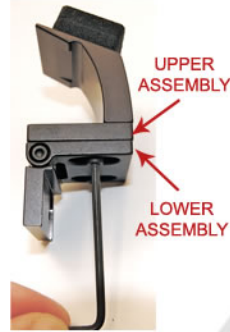
INSTALLATION INSTRUCTIONS FOR THE CORVETTE C6 REAR VIEW MIRROR



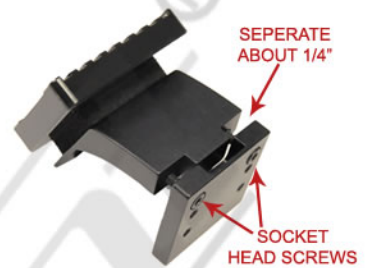
1 - You will need to partially disassemble this mount for installation. Remove the vertical adjustment pinch plate by removing both socket head screws as shown above.



2 - Remove the two suction cups that are on your existing V1 windshield mount. These two holes are now used to attach the vertical adjustment bracket. The button head screws go on top of the bracket and the internal star lock washers and nuts go under the V1 windshield mount.



3 - Separate the upper and lower assemblies by removing the two socket head screws that are in the counter bored slots as shown above.



4 - IMPORTANT - Loosen the two socket head screws and separate the two pieces of the upper assembly about 1/4" as shown above. Do not remove the screws.



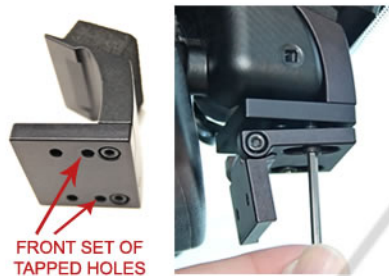
5 - This photo illustrates how the upper assembly fits into the recessed area behind the mirror. This is just a reference photo as you will not be able to see this when you install.



6 - Place the windshield pad onto the upper assembly. Position the Upper Assembly as shown above. Compress the silicone pad into the windshield pad as you slide upwards into the recessed area behind the mirror. You will hear the upper assembly snap into place and will be touching the mirror when it is positioned correctly as shown in fig. 7.



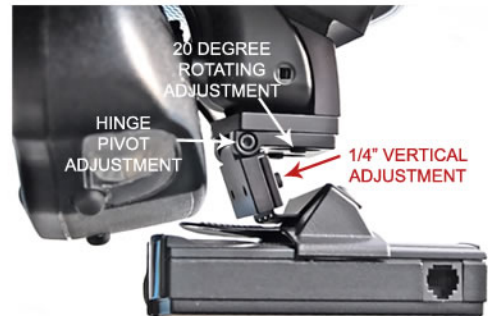
7 - Retighten the two socket head screws. You will notice a little resistance once the rubber pad starts compressing against the bottom of the mirror. Grab the Upper Assembly and make sure it is securely attached to the mirror.



8 - Reattach the Lower Assembly with the two socket head screws, hi collar lock washers, and flat washers. Be sure to use the front set of tapped holes as shown above.



9 - Reattach the Vertical Adjustment Bracket and Pinch Plate with the two socket head screws. Slide the bracket as far up as it will go before tightening the Pinch Plate.



10 - Install the RD onto the mount. Make the necessary adjustments as shown. We recommend adjusting the RD so it is as close to the bottom of the mirror as possible. After all adjustments are made, be sure to check that all adjustment screws are tight. Grab the long arm of the allen wrench to assure that these screws are securely tightened.

CAUTION

DO NOT use this mount if it interferes with the adjustability or the operation of your rear view mirror in any way.

DO NOT use this mount if the radar detector creates an unsafe viewing obstruction.

DO NOT ATTEMPT TO MODIFY THIS PRODUCT. Consult the manufacturer for assistance.

All BlendMount products are accompanied with detailed installation instructions and adjustment tips. You are encouraged to contact customerservice@blendmount.com or call J28 Design at 1-707-664-8234 for further assistance.

Check the BlendMount Forum for installation tips and some vehicle specific installs.

www.blendmount.com

Your feedback is very important to us. Please email any questions or comments you have to customerservice@blendmount.com